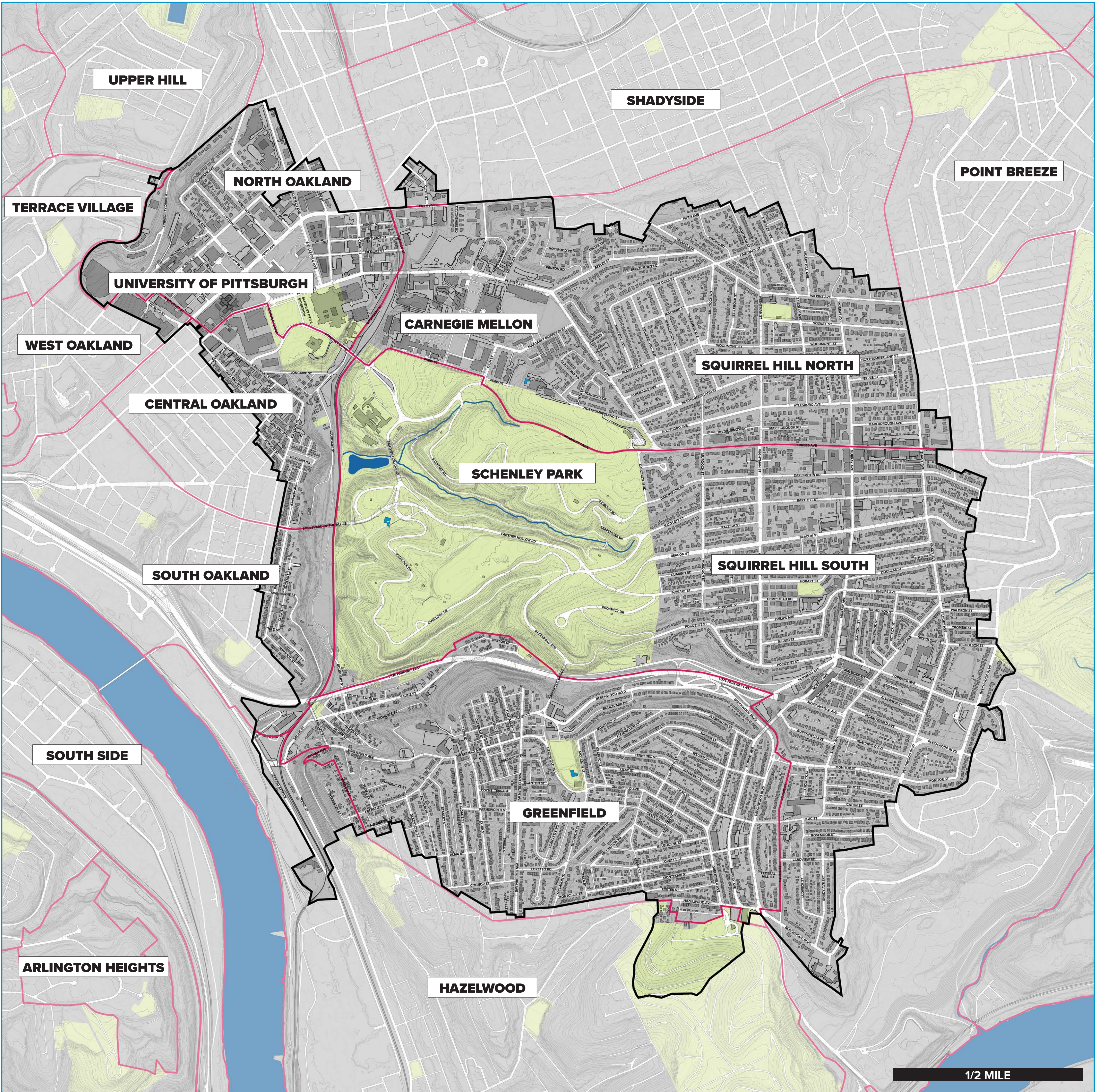


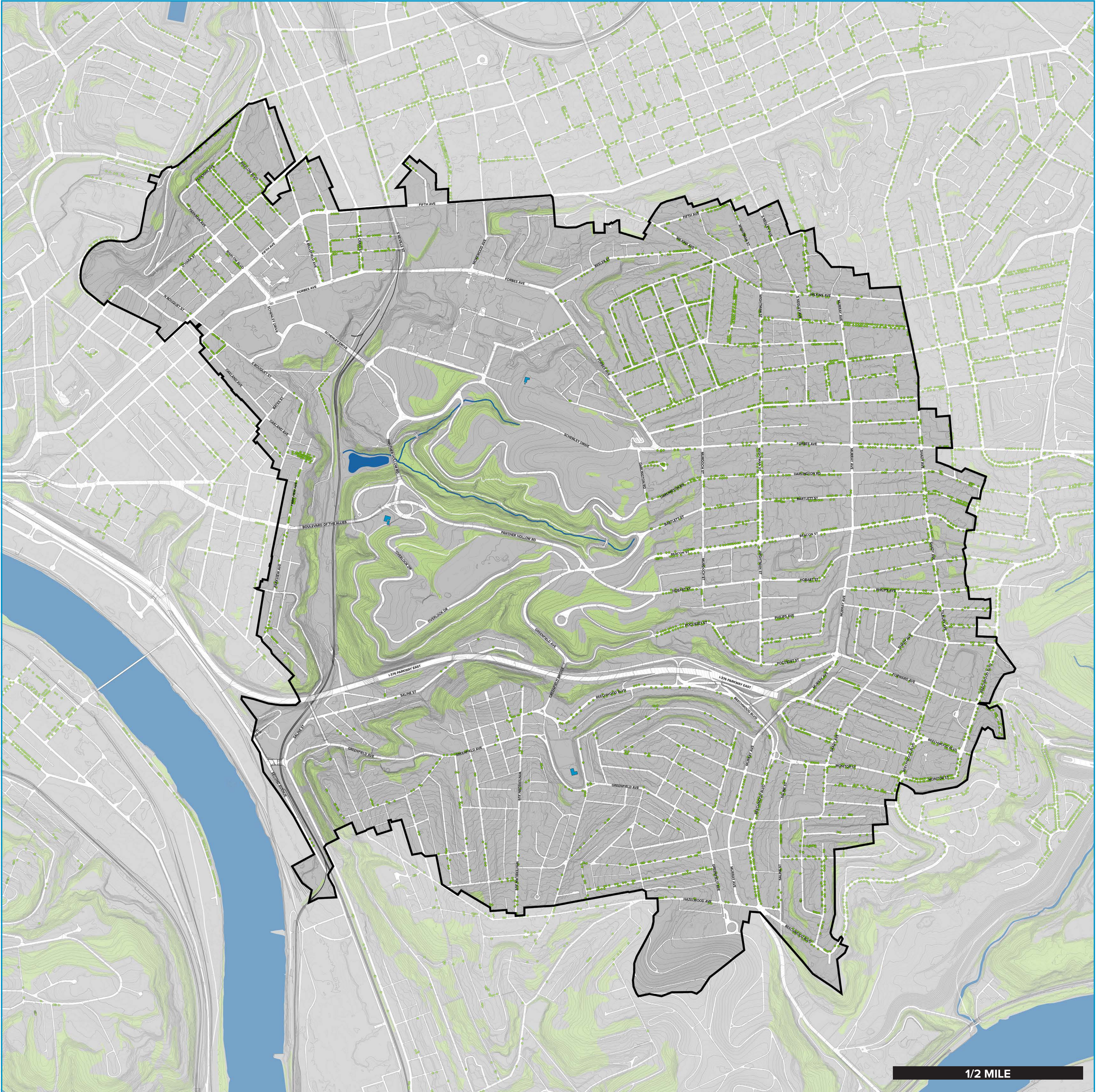


Neighborhoods and Key Landmarks





Street Trees and Wooded Areas





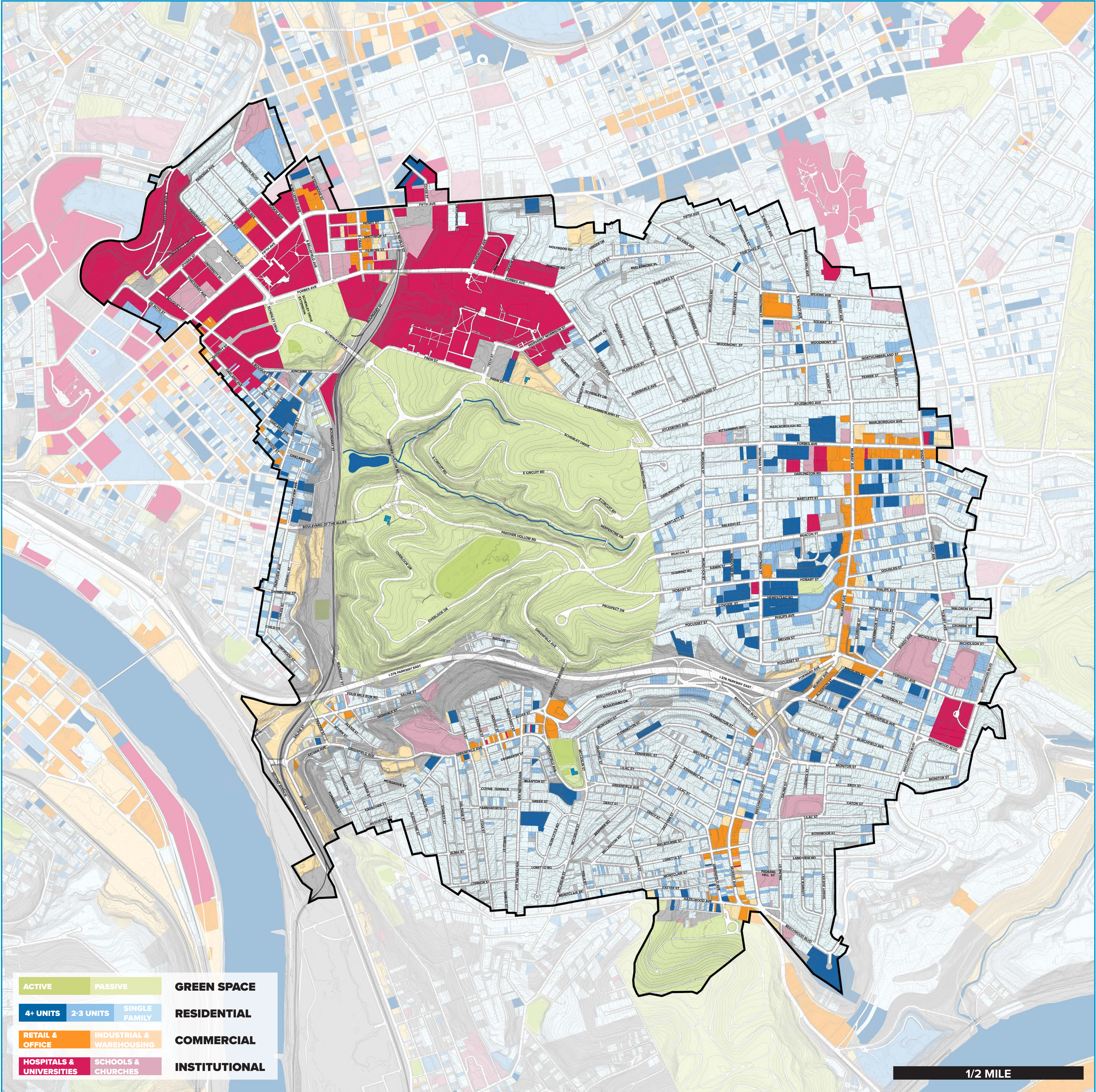
Landslide-Prone Slopes





Four Mile Run Stormwater Improvement Project

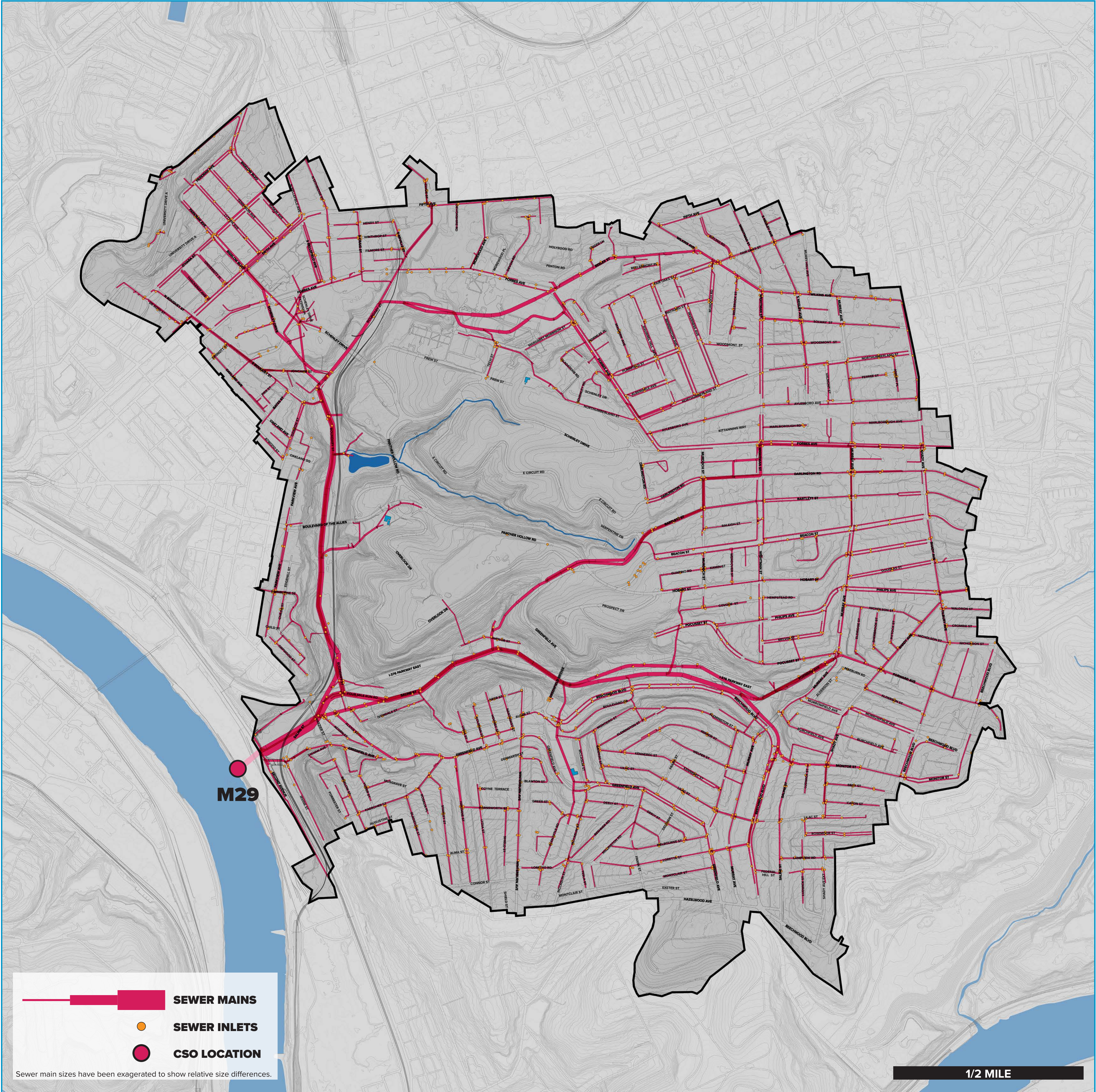
Land Use





Four Mile Run Stormwater Improvement Project

Sewer Network





Four Mile Run Stormwater Improvement Project

Impervious Surfaces Roads, Buildings, and Parking Lots

