



Bruecken Pump Station Improvements

Highland Park Community Council

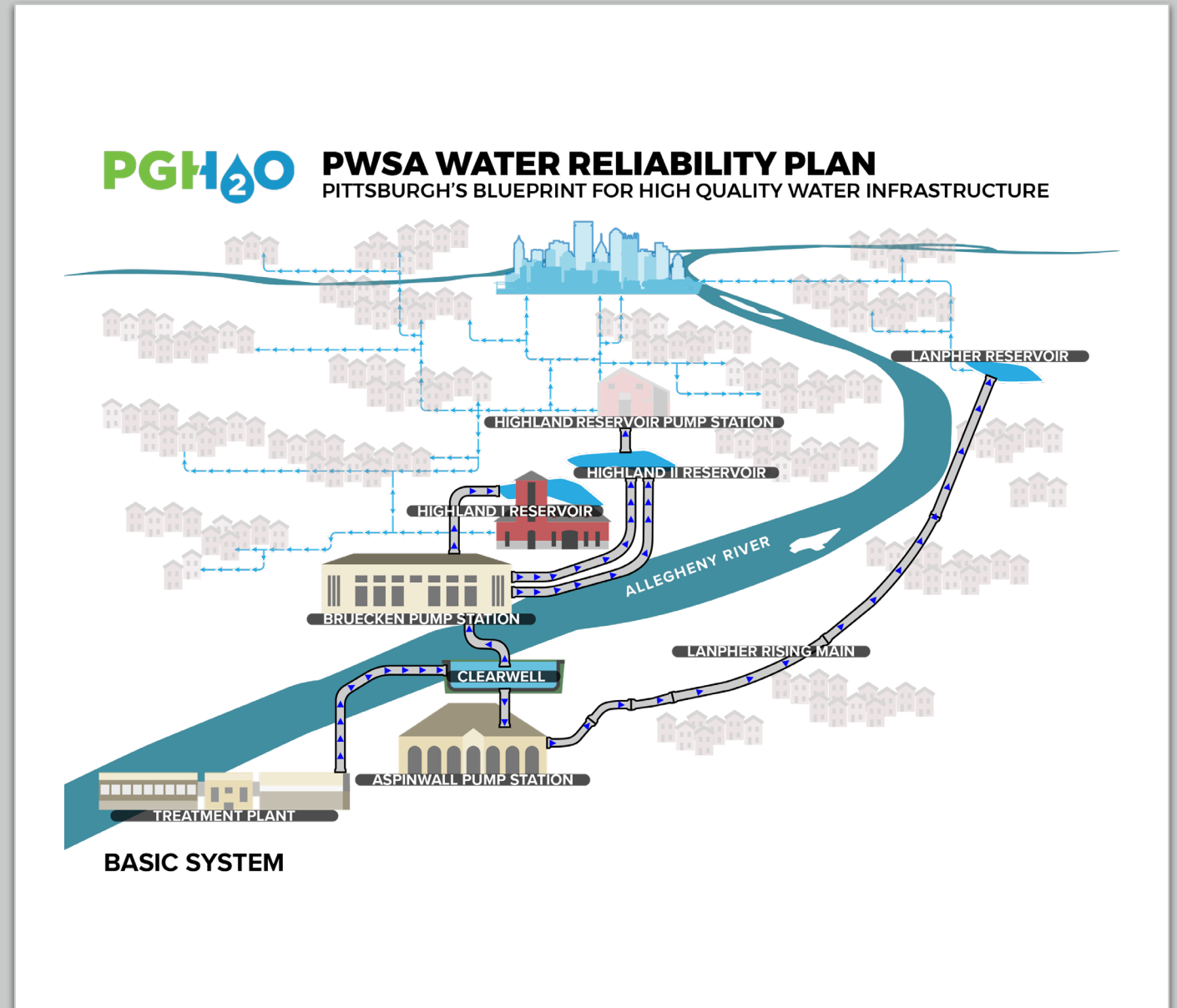
January 20, 2022

Agenda

- Welcome and Introductions
- Introduce Water Reliability Plan
- Introduce Arts Commission Requirements
- Design Plans for Bruecken Pump Station
- Review Project Schedule
- Discuss Community Outreach Plan
- Questions and Answers

Water Reliability Plan

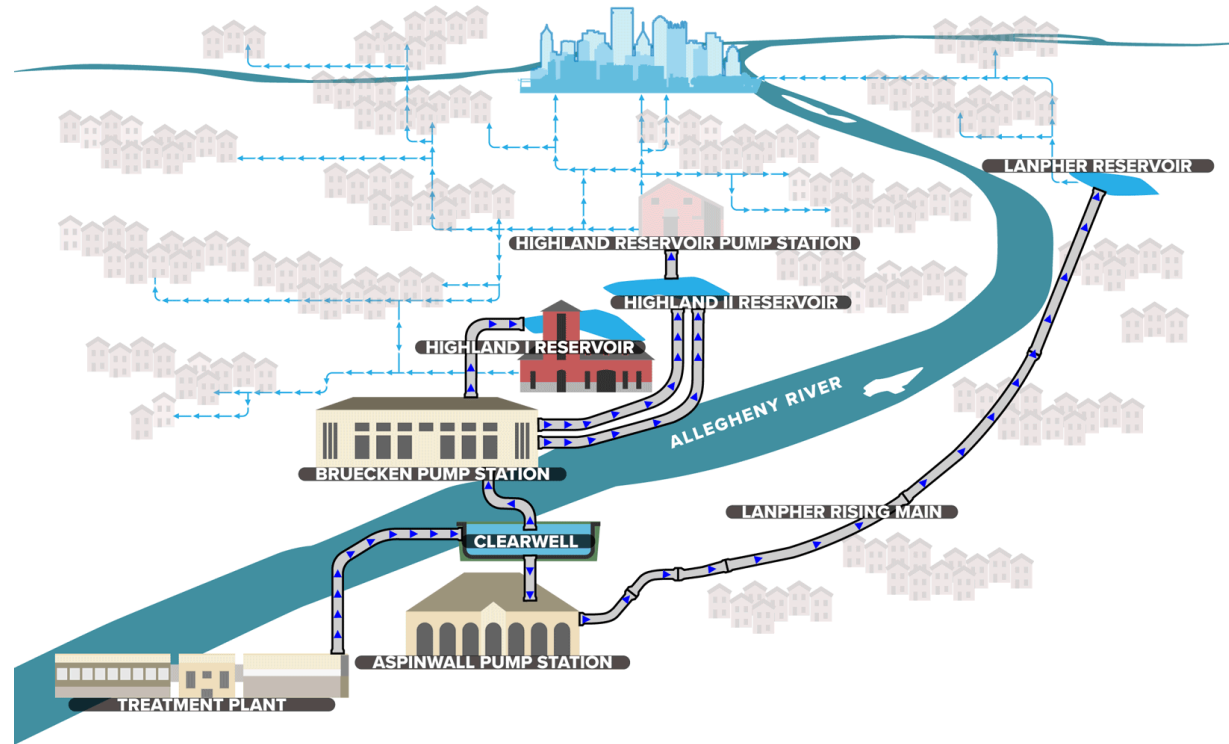
- Series of once-in-a-generation projects
- Will strengthen and add redundancy to water system
- Culminates with complete restoration of Clearwell
- Required by State through Consent Order
- Investment of \$300 million over next five years





PWSA WATER RELIABILITY PLAN

PITTSBURGH'S BLUEPRINT FOR HIGH QUALITY WATER INFRASTRUCTURE



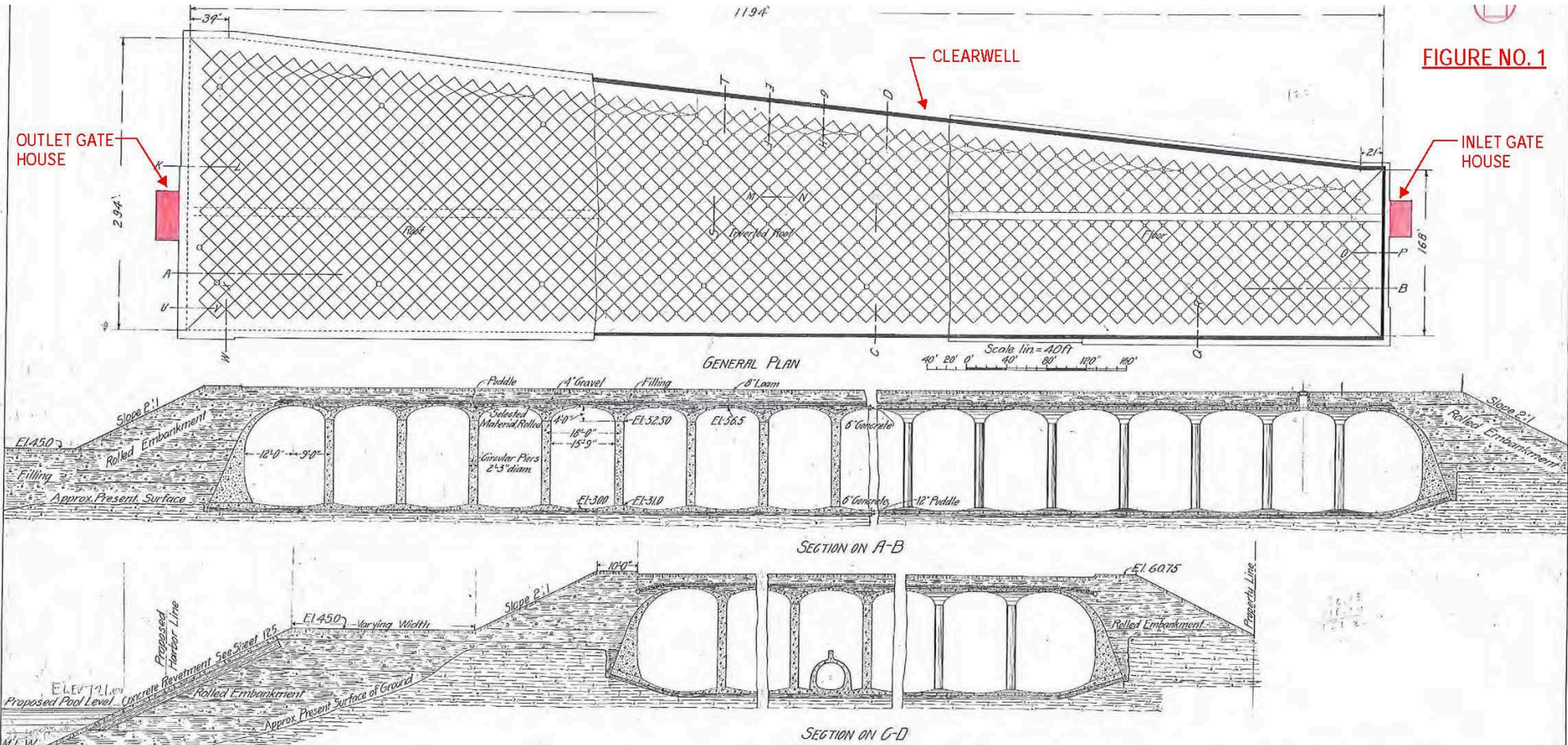
BASIC SYSTEM



Clearwell Replacement

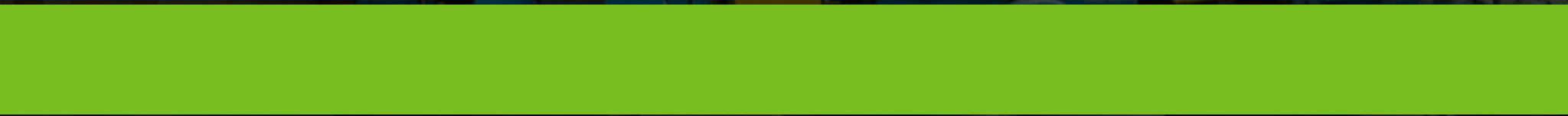


Clearwell Replacement





Pumping, Storage, & Distribution Projects

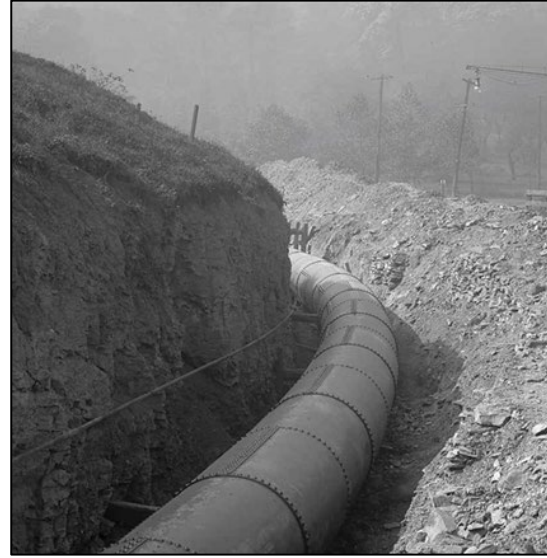


Pumping Projects



Aspinwall Pump Station

Distribution Projects



Redundant Lanpher
Rising Main

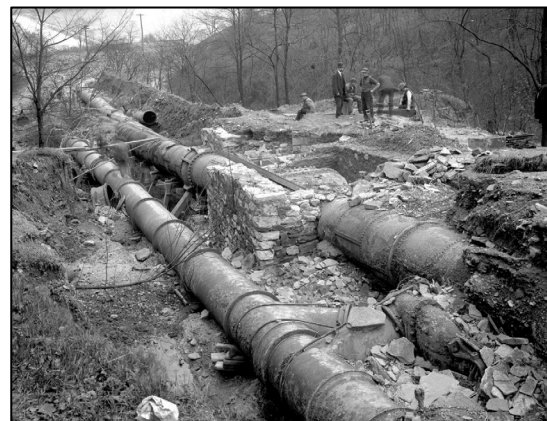
Storage Projects



Lanpher Reservoir (Completed)



Bruecken Pump Station



Rising Mains
3 and 4



Highland Reservoir #2

Permitting and Outreach Requirements

State

- Public Water Supply Permit
- Pennsylvania Natural Diversity Inventory
- Pennsylvania Historical & Museum Commission - Section 106

County

- National Pollutant Discharge Elimination System (NPDES)
- ACT 14 Notification
- Air Quality Permit

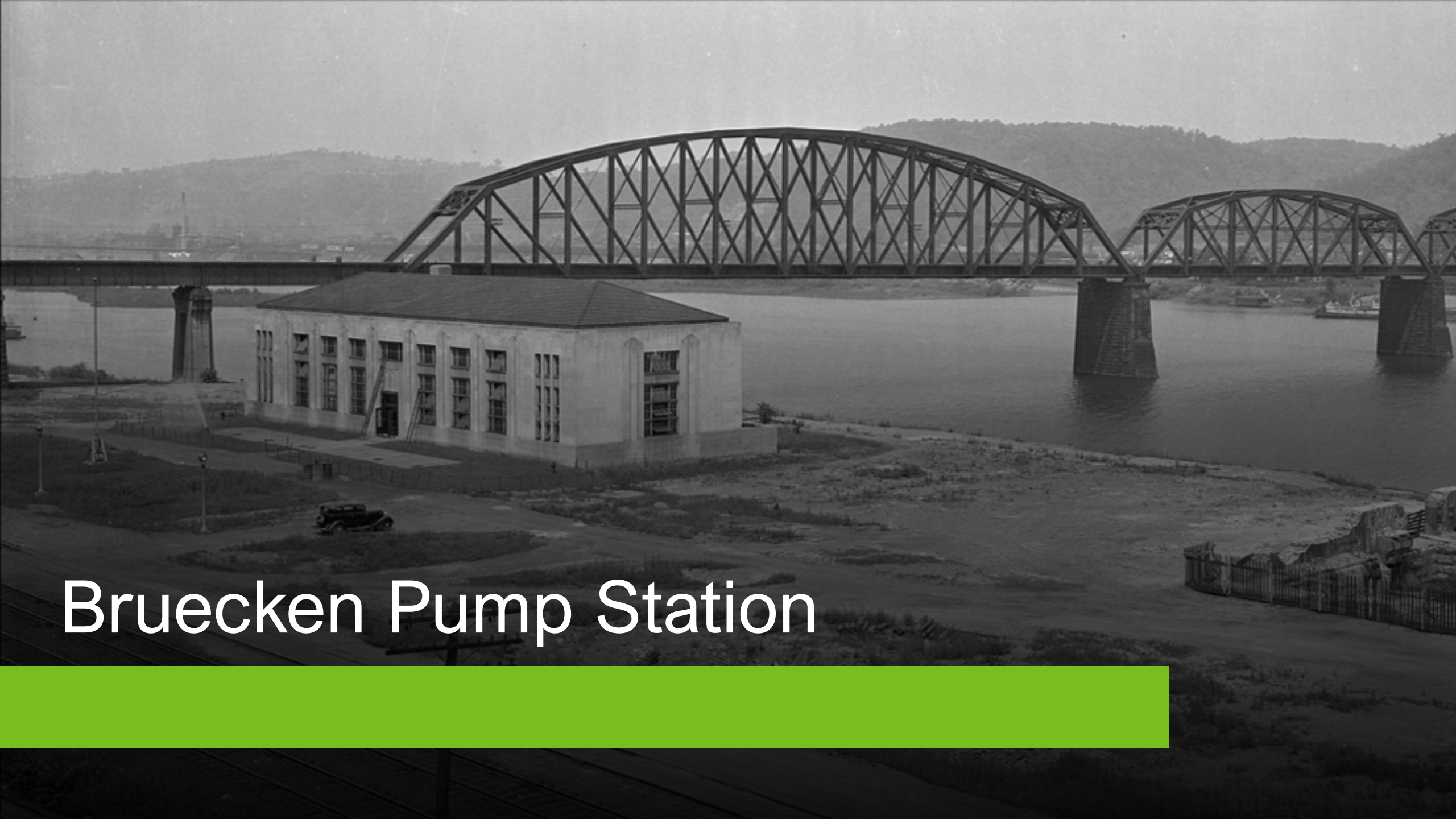
City

- Art Commission Approval
- Zoning Development Review
- Building Permit
- Electrical Permit
- HVAC Permit
- Fire Alarm Permit
- Demolition Permit

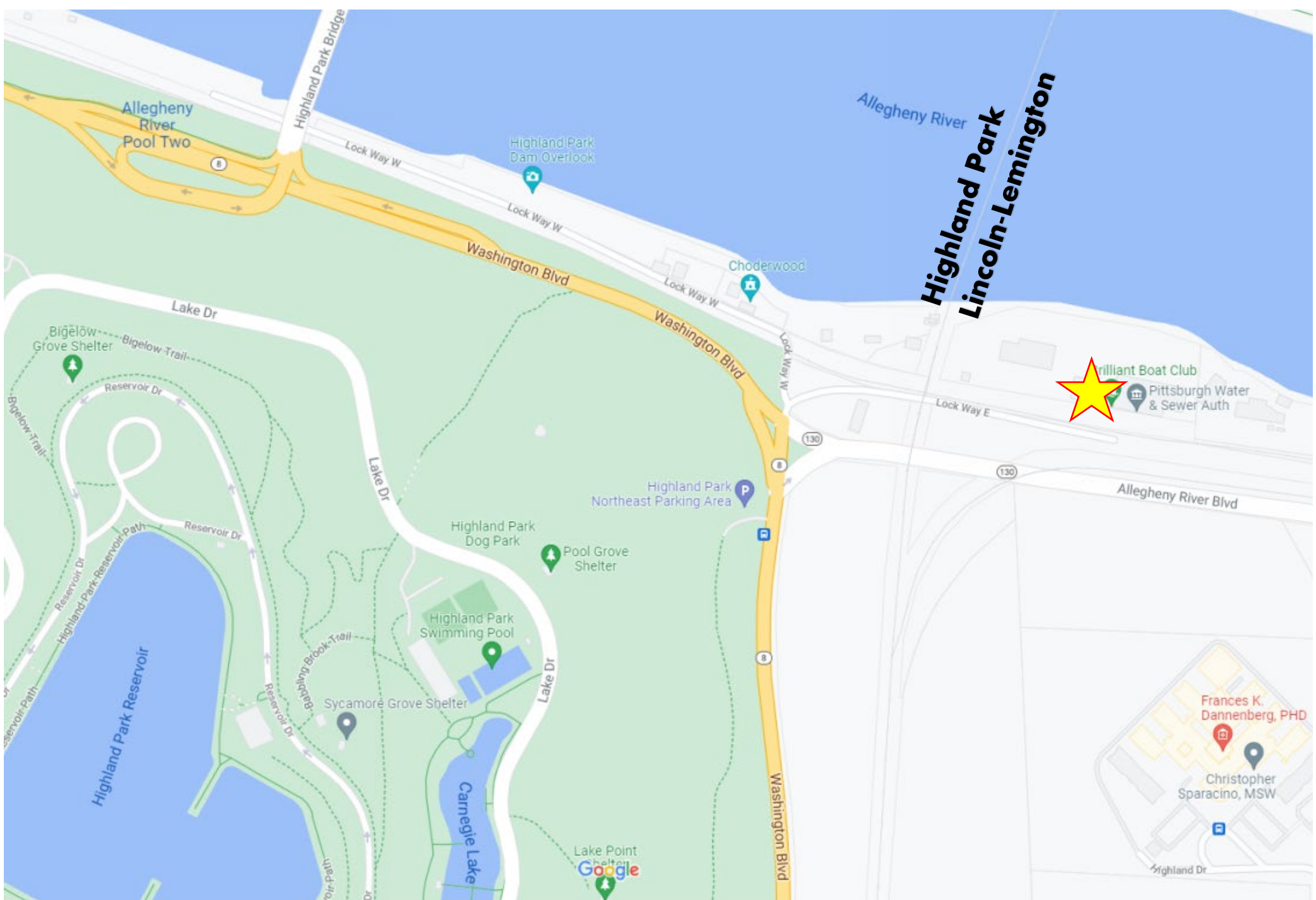
Arts Commission Requirements

“The Art Commission is mandated to review the urban design, architectural, and landscape features of structures that are erected on or above land owned by the City.” – pittsburghpa.gov

- Bruecken Pump Station is a public facility on city land, therefore qualifying it for Art Commission review before construction.
- The driveway leading to the station sits within the Highland Park Community, which is why we are presenting our plans to you.
- The feedback from this meeting will be incorporated into our submission to the Arts Commission.



Bruecken Pump Station



Highland Park Lincoln-Lemington



Frances K. Dannenberg, PHD
Christopher Sparacino, MSW

Bruecken Pump Station



Bruecken Pump Station

- Designing and building new facility and associated structures (pictured left), old pump station will remain in place.
- New building will house pumping equipment, original building will be used for other PWSA operations.
- Replacing perimeter fencing.
- Re-organizing materials that are stored on property.



Bruecken Pump Station Construction Impacts

- Trucks and equipment will enter Brilliant Yard via Butler Street (SR 8)/Washington Blvd.
- All work will occur within the facility.
- Project Schedule
 - M-F, 7:00a.m. – 5:00 p.m.



Project Timeline: Bruecken Pump Station

Project/Phase	Anticipated Schedule
Design Completion and Permitting	Currently the 90% design submittal is being reviewed by PWSA. Permitting in progress.
Bruecken Pump Station Upgrades	Contract Award: Fall/Winter 2022 Construction Start: early 2023 Anticipated Completion: early 2026

Preliminary Community Outreach Plan

As we approach the start of construction, we will communicate with the neighborhood via

- Project signs
- Community meeting
- PWSA website

www.pgh2o.com/water-reliability-plan



A woman with short dark hair, wearing a blue polo shirt and large white square earrings, is leaning on a silver metal railing. She is looking towards the left of the frame. In the background, there is a concrete-lined canal with water. Beyond the canal, there are lush green trees and a tall building in the distance under a bright, slightly hazy sky. The overall scene is outdoors and appears to be a park or public space.

Thank you

Questions or comments,
please contact Mora
McLaughlin,
mmclaughlin@pgh2o.com