



FOUR MILE RUN OUTFALL & STORMWATER IMPROVEMENTS

TRAIL MAINTENANCE PLAN – JUNCTION HOLLOW AND FOUR MILE RUN NEIGHBORHOODS

PRESENTED TO:

Pittsburgh Department of Mobility and Infrastructure (DOMI)

OCTOBER 2020

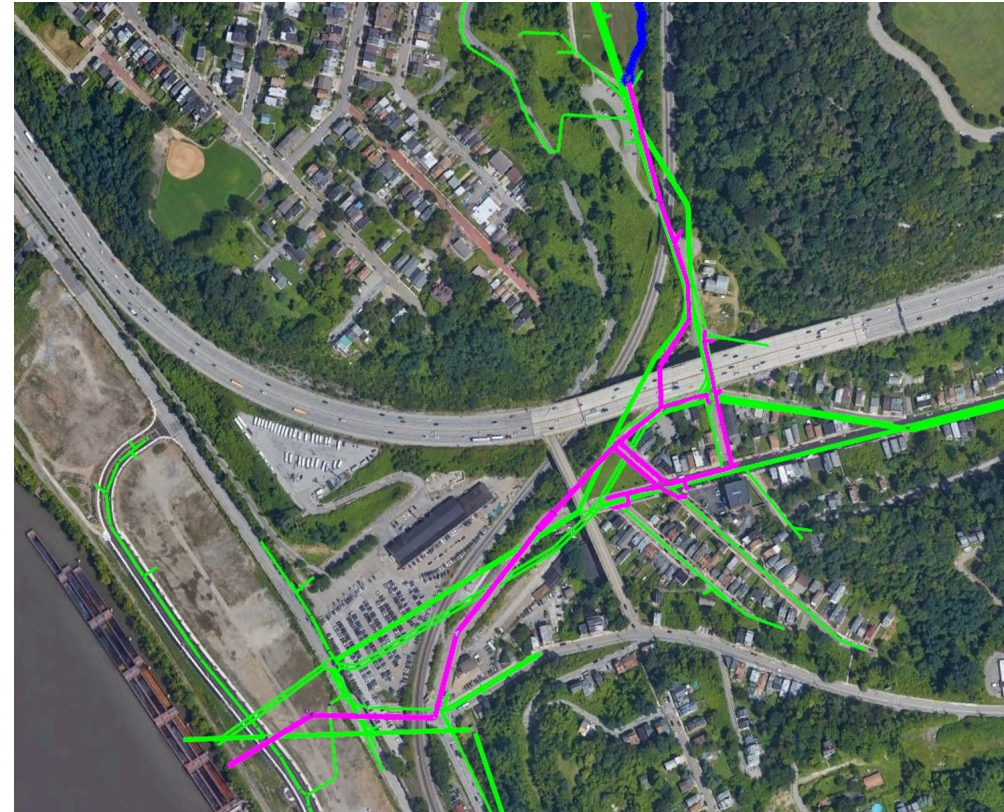
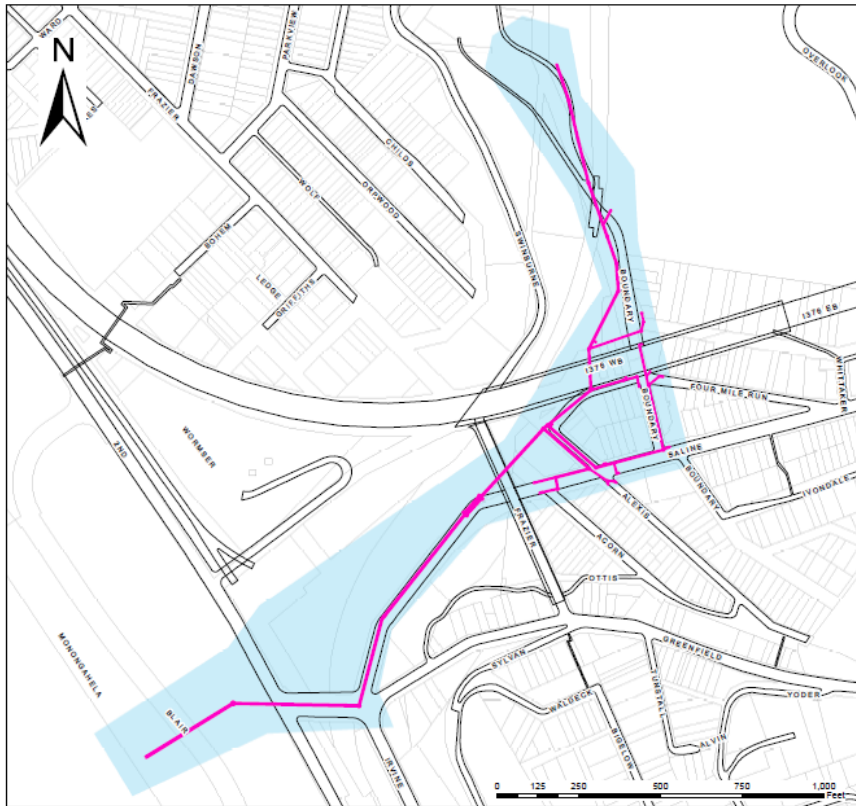


A. STORMWATER PIPELINE PROJECT LIMITS

STORMWATER PIPELINE PROJECT LIMITS

PIPELINE SCHEDULE:

MID 2021 – MID 2022

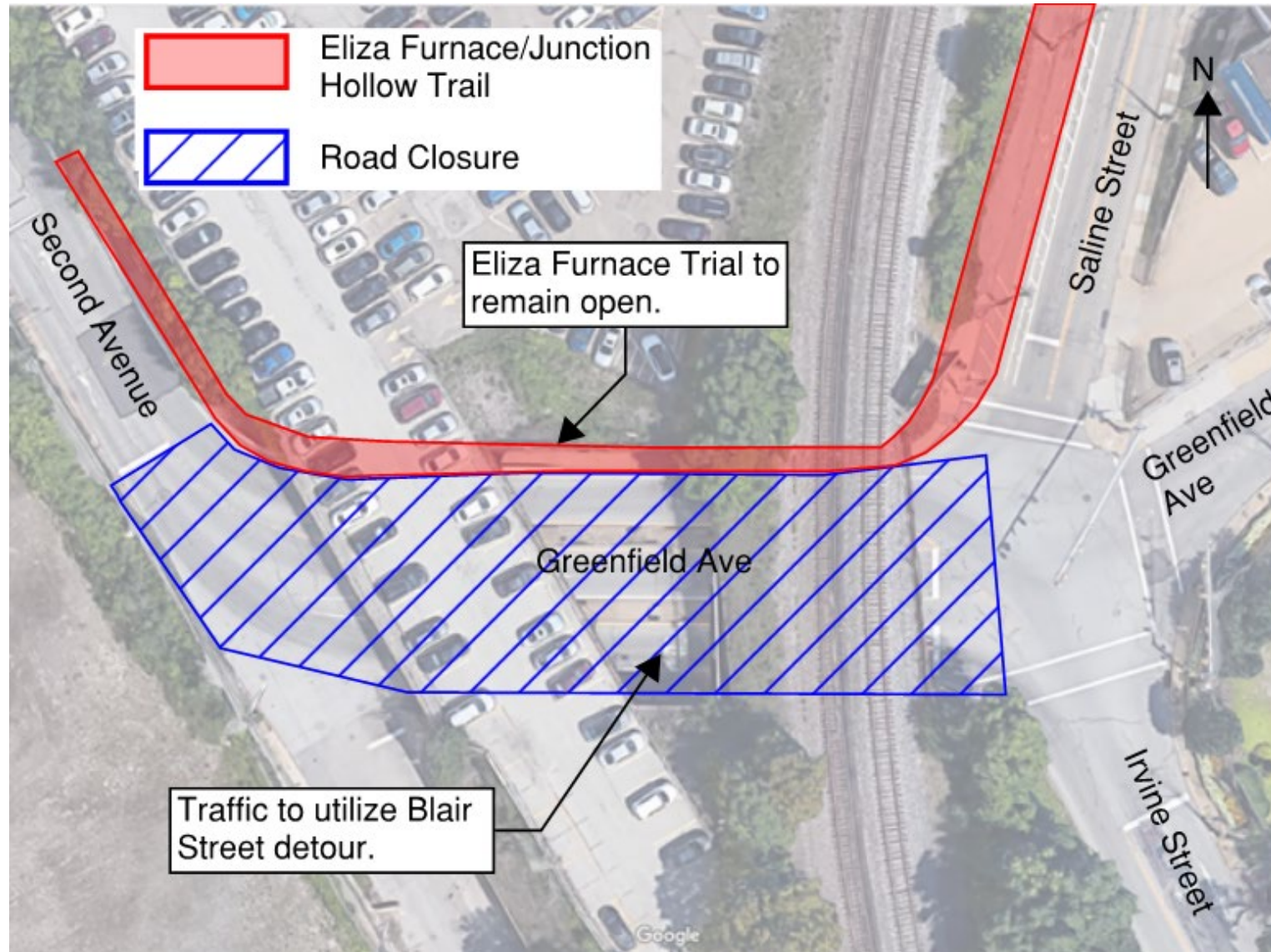


B.

TRAIL MAINTENANCE PLAN

SECOND AVENUE TO SCHENLEY PARK

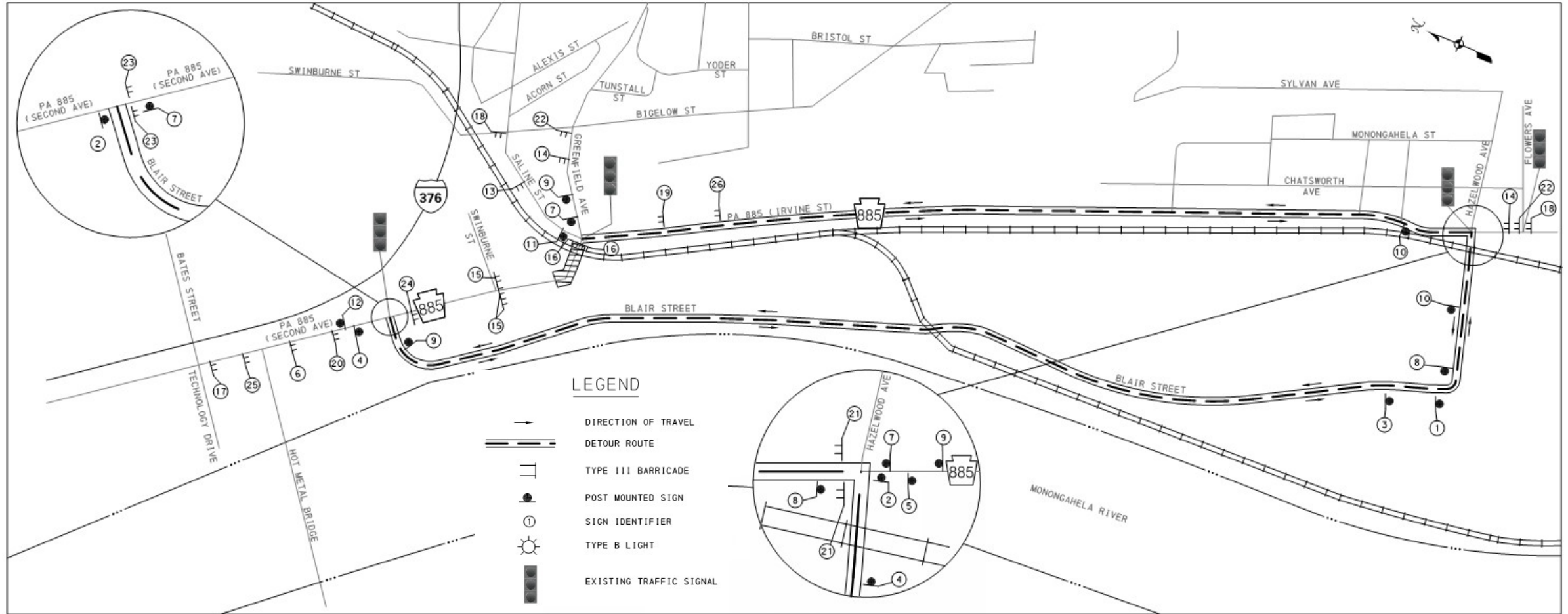
SR 0885 (Greenfield Avenue) Under Railroad Bridge



NOTES:

1. WORK WILL OCCUR FOR A DURATION OF APPROXIMATELY 3 WEEKS.

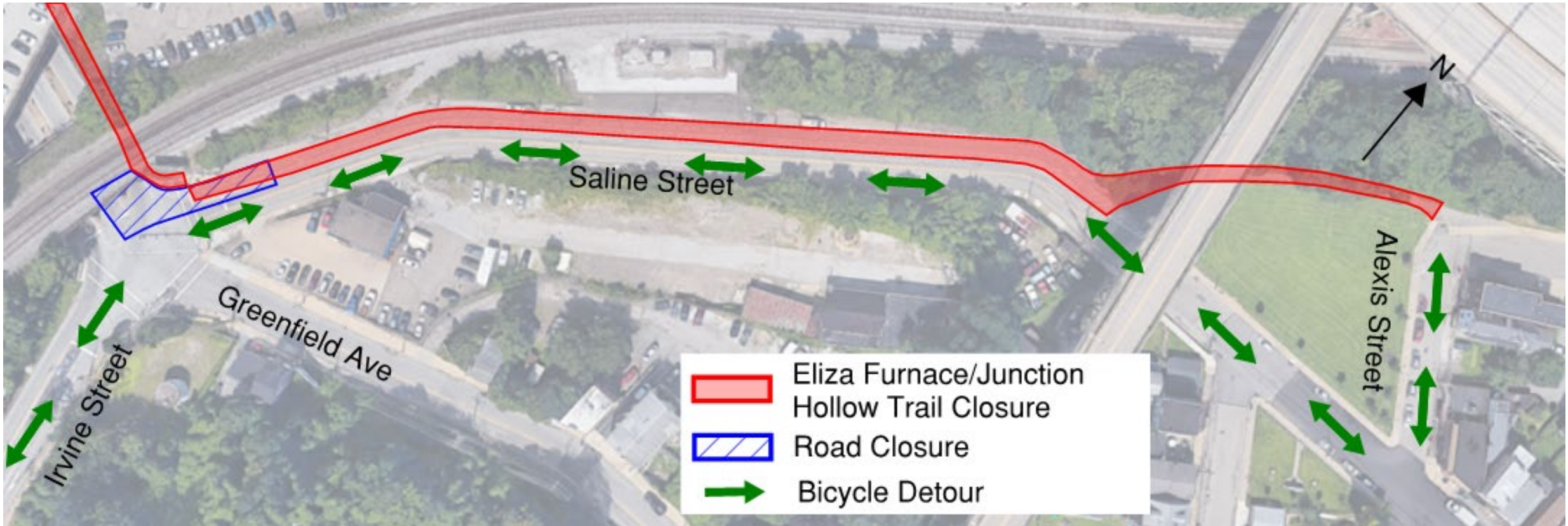
SR 0885 (Second Avenue) Vehicle Detour



SR 0885 CLOSURE AND DETOUR



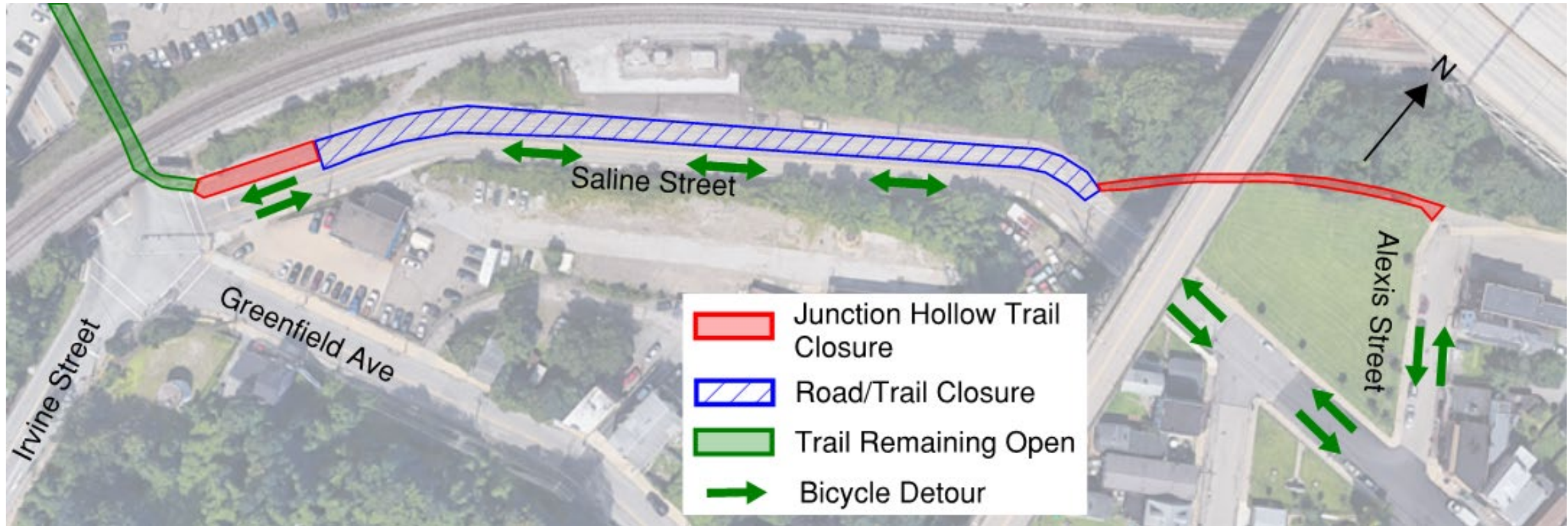
SR 885 (Greenfield Avenue)/Saline Street



NOTES:

1. BICYCLES TO ENTER TRAFFIC AT ALEXIS STREET AND UTILIZE THE SR 0885 DETOUR.
2. PEDESTRIANS TO UTILIZE SIDEWALK ALONG ALEXIS STREET TO SIDEWALK ALONG THE SOUTHERN SIDE OF SALINE STREET.
3. WORK WILL OCCUR FOR A DURATION OF APPROXIMATELY 1 WEEK (MON-FRI). TRAIL WILL BE REOPENED TO PEDESTRIAN/BIKE ACCESS ON THE WEEKEND.
4. FLAGGERS WILL BE ENFORCING TRAFFIC PATTERNS DURING THIS WORK FOR SAFETY.

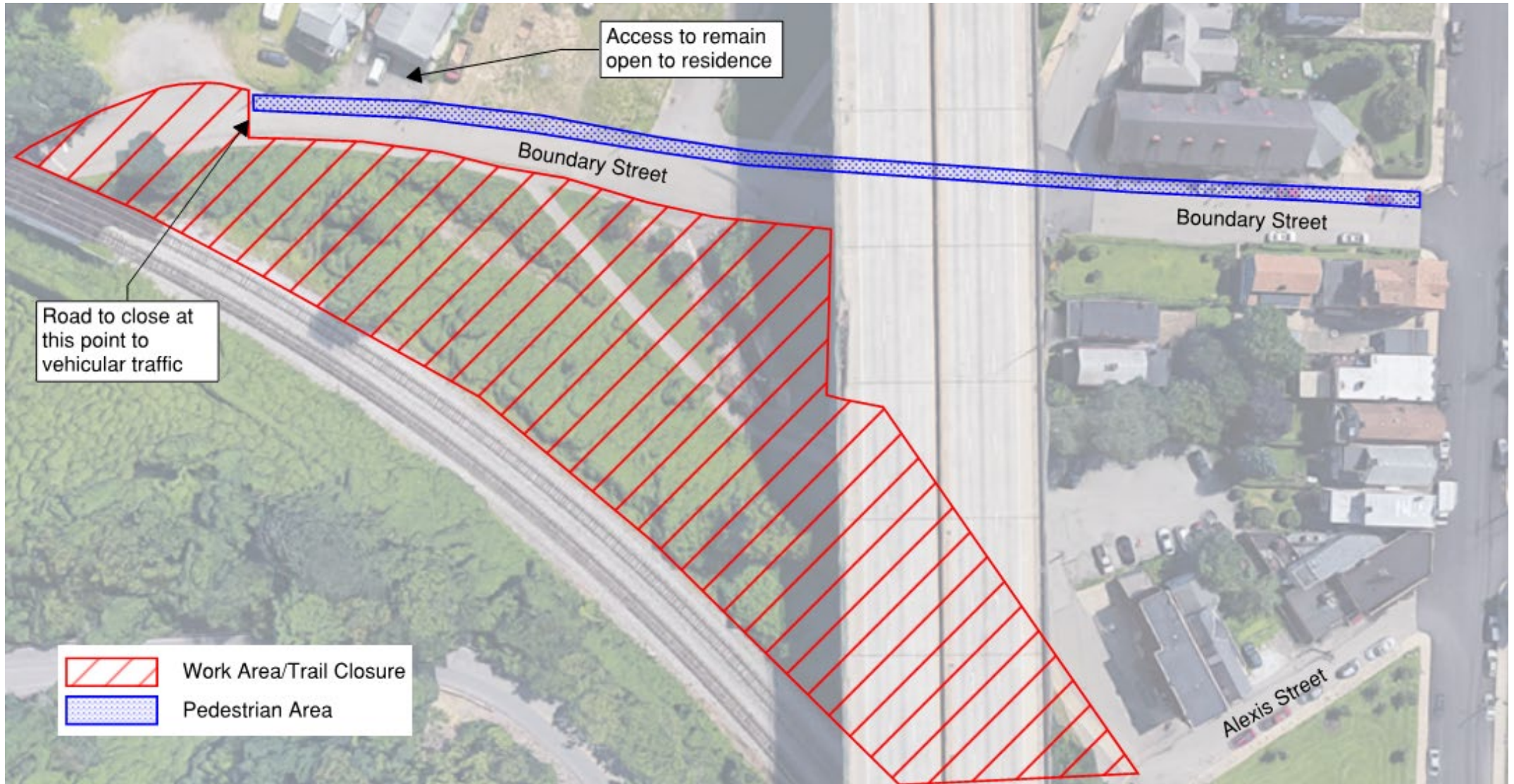
Saline Street



NOTES:

1. BICYCLES TO ENTER TRAFFIC AT ALEXIS STREET AND RE-ENTER TRAIL AT SALINE STREET/IRVINE STREET/GREENFIELD AVENUE INTERSECTION.
2. PEDESTRIANS TO UTILIZE SIDEWALK ALONG ALEXIS STREET TO SIDEWALK ALONG THE SOUTHERN SIDE OF SALINE STREET.
3. WORK WILL OCCUR FOR A DURATION OF APPROXIMATELY 8 WEEKS.
4. FLAGGERS WILL BE ENFORCING TRAFFIC PATTERNS DURING THIS WORK FOR SAFETY.

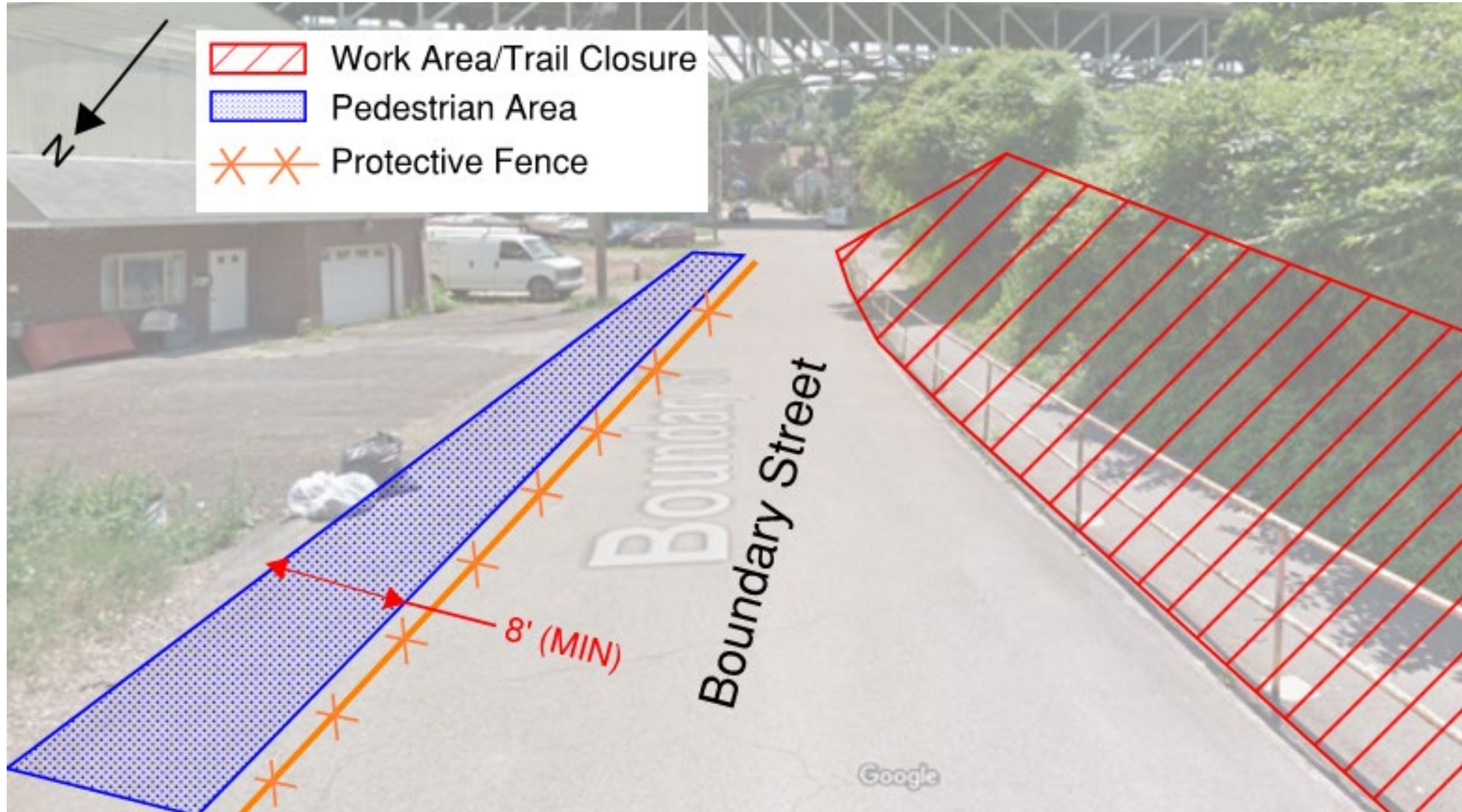
Boundary Street



NOTES:

1. WORK WILL OCCUR FOR A DURATION OF APPROXIMATELY 6 WEEKS.
2. FLAGGERS WILL BE ENFORCING TRAFFIC PATTERNS DURING THIS WORK FOR SAFETY.

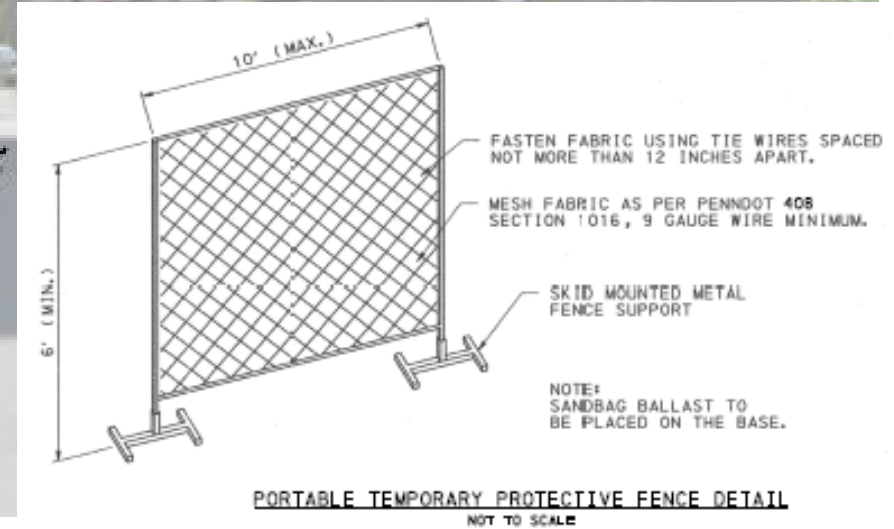
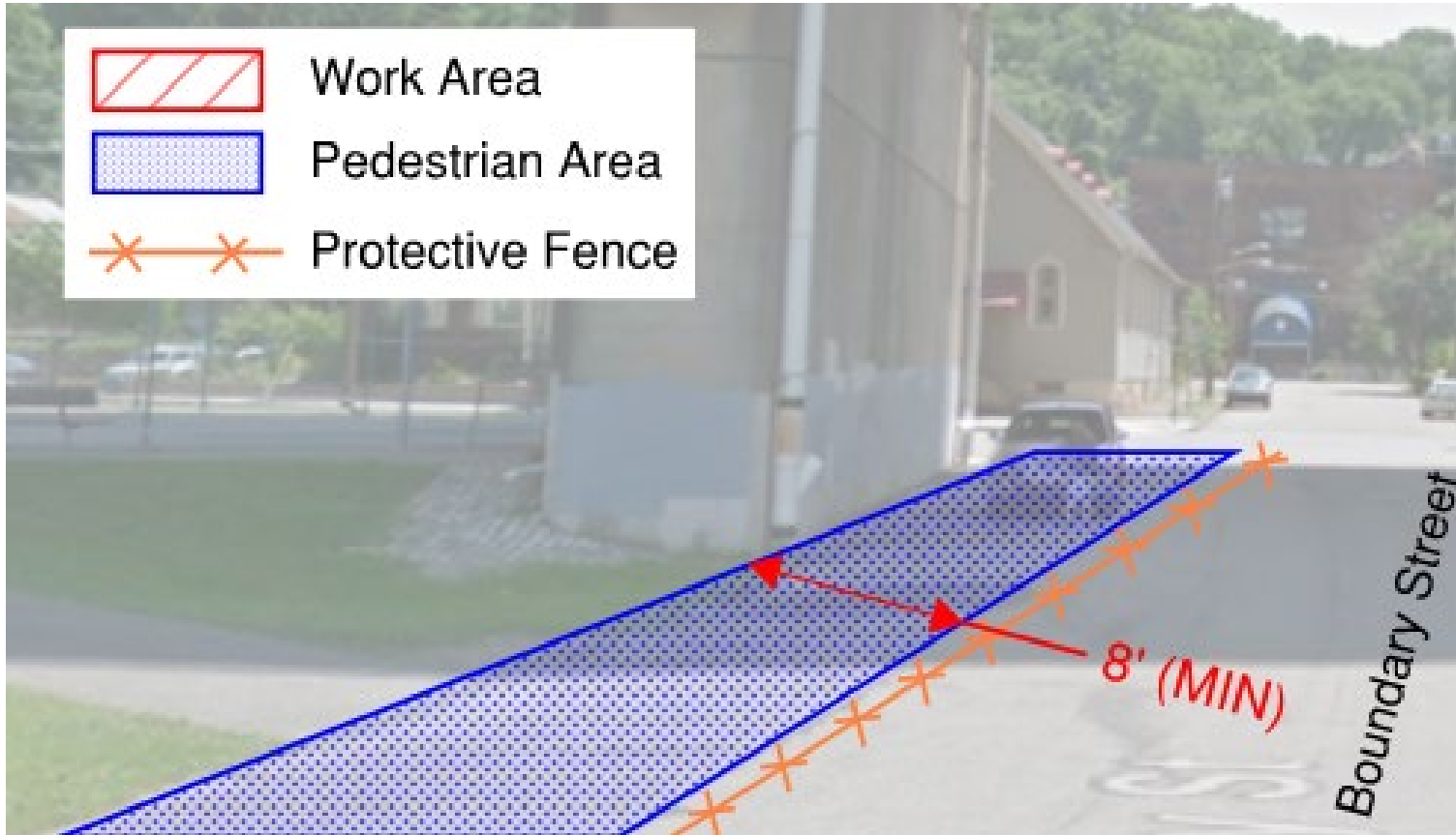
Boundary Street



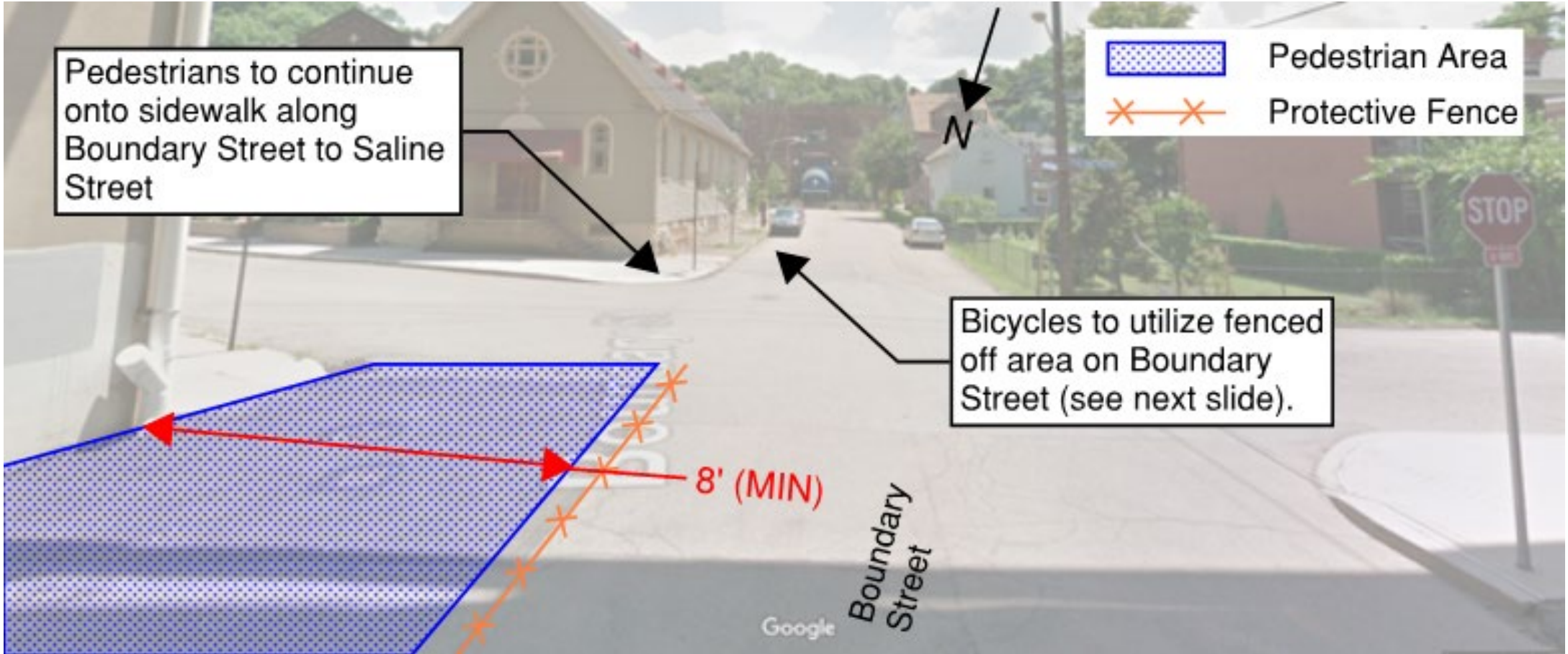
NOTES:

1. WHILE WORK IS ONGOING IN THE JUNCTION HOLLOW TRAIL, ALL BIKE AND PEDESTRIAN TRAFFIC WILL BE ROUTED TO BOUNDARY STREET AS SHOWN
2. ONCE WORK IN TRAIL IS COMPLETE AND RESTORED, TRAIL WILL BE REOPENED, AND WORK WILL COMMENCE ON BOUNDARY STREET

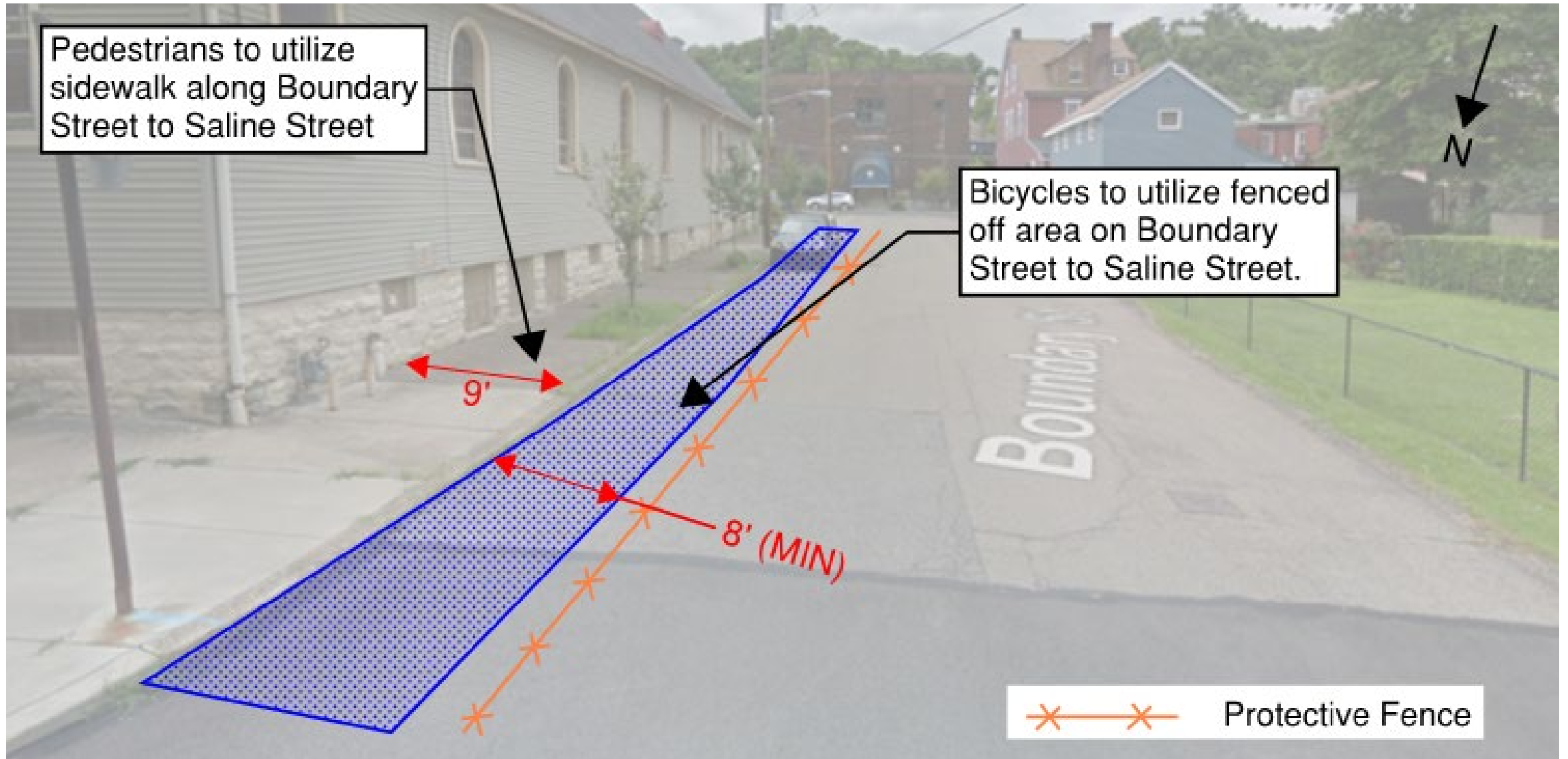
Boundary Street



Boundary Street to Saline Street



Boundary Street to Saline Street



C. JUNCTION HOLLOW STREAM PROJECT LIMITS

Junction Hollow Project Limits

JUNCTION HOLLOW SCHEDULE:

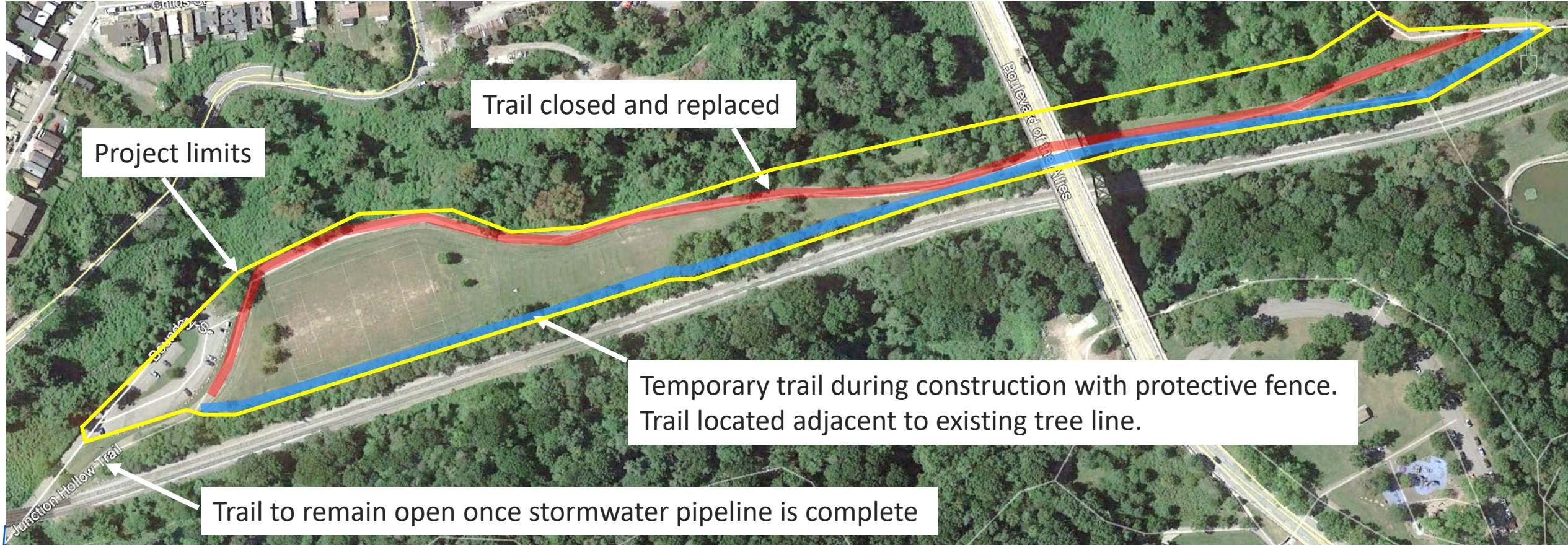
MID 2021 – SPRING 2023



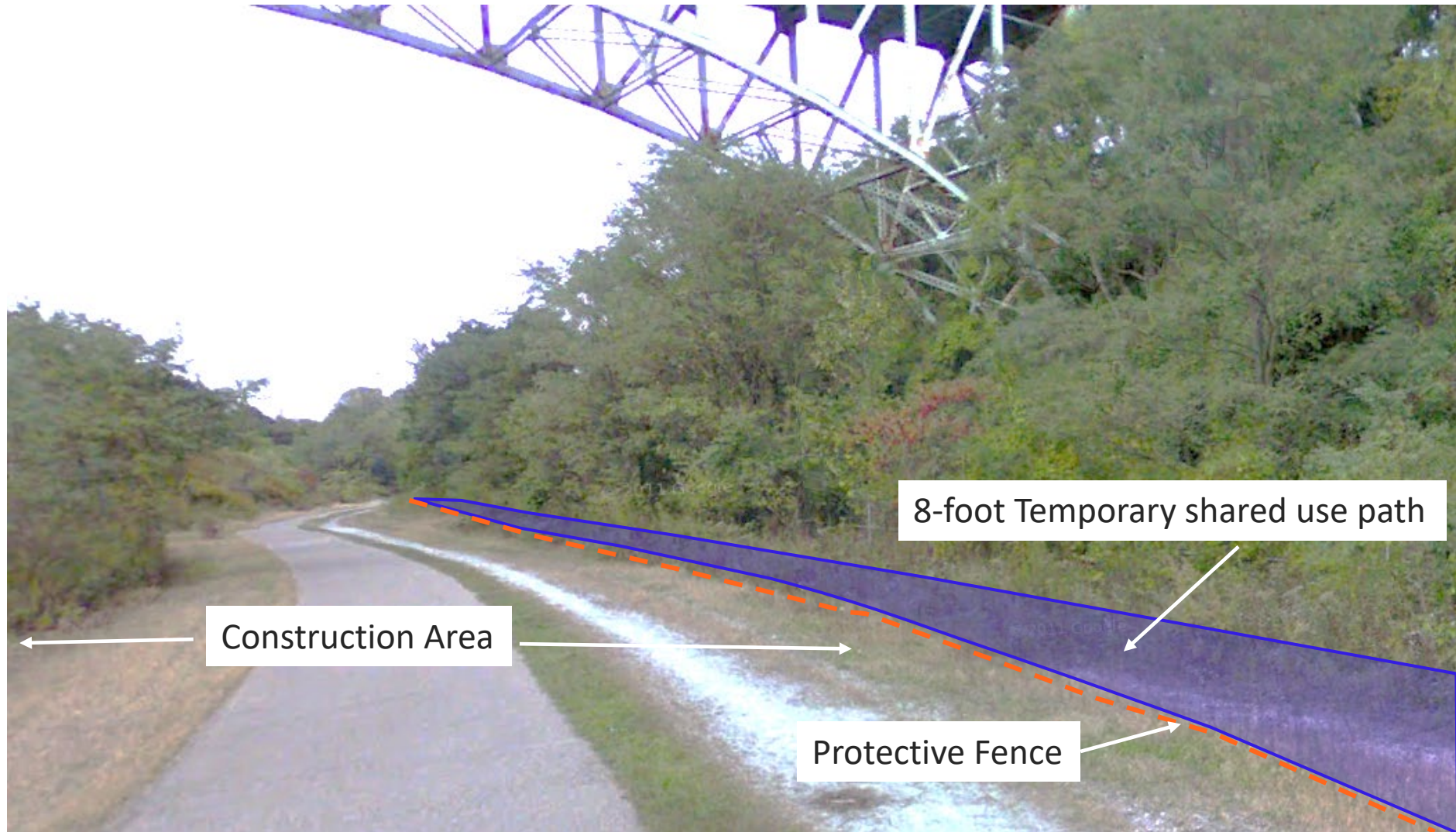
D. TRAIL MAINTENANCE PLAN

- JUNCTION HOLLOW IN SCHENLEY PARK

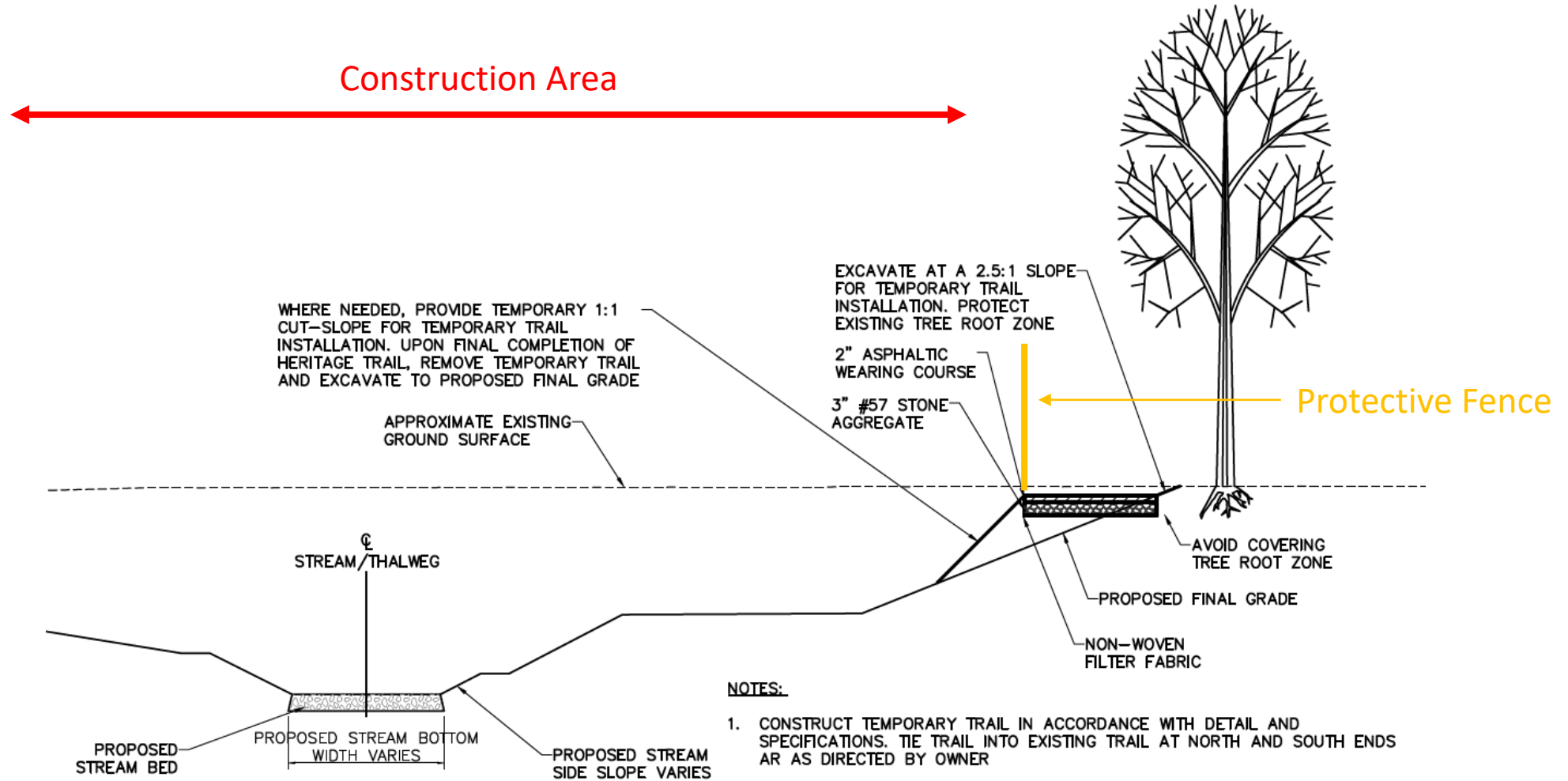
Junction Hollow Trail Maintenance



Junction Hollow under Blvd of the Allies Bridge



Junction Hollow Temporary Trail Detail



NOTES:

1. CONSTRUCT TEMPORARY TRAIL IN ACCORDANCE WITH DETAIL AND SPECIFICATIONS. TIE TRAIL INTO EXISTING TRAIL AT NORTH AND SOUTH ENDS AS DIRECTED BY OWNER
2. IF NECESSARY, PRUNE TREE LIMBS OVERHANGING TRAIL TO HEIGHT OF 10 FEET
3. FOR POST-CONSTRUCTION, REMOVE FILTER FABRIC, STONE AGGREGATE, AND ASPHALT PAVEMENT

1 TYPICAL TEMPORARY TRAIL
C201 NOT TO SCALE